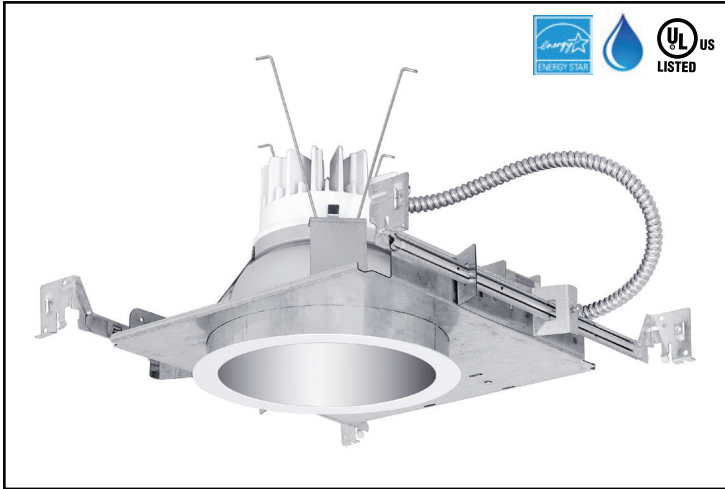
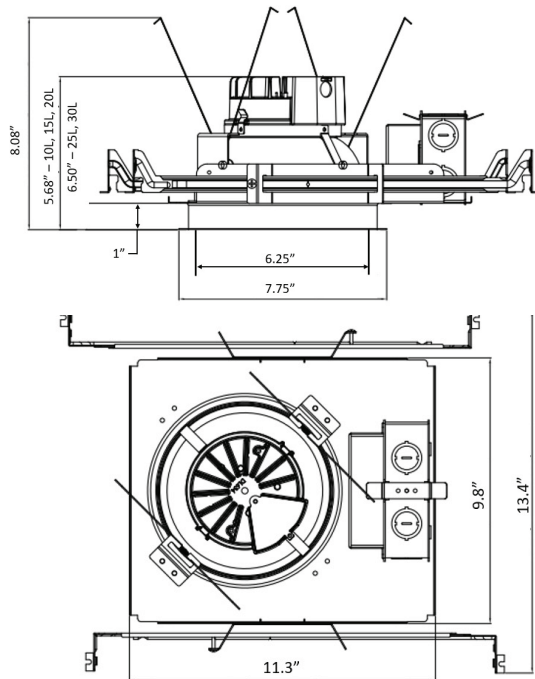


### PRODUCT IMAGES



### Standard Dimensions:



See Page 3 for additional dimensioned Line Art

### ORDERING INFORMATION

ORDERING EXAMPLE: 6R15L35KAN

6R	Aperture	Output	Kelvin	Reflector	Function	Dimming	Emergency
	6R - 6" round	10L - 1000 lumens	30K	AN - Semi-Diffuse Anodized	Blank - Downlight	Blank - 10%, 0-10V Dimming	Blank - No Battery
		15L - 1500 lumens	35K	WF - Semi-Diffuse Anodized with White Flange	WW- Lens Wall Wash	DM1- 1%, 0-10V Dimming	EMR - Battery Back Up with Remote Test Switch
		20L - 2000 lumens	40K	WH - White Cone & Trim			EMI - Battery Back Up with Integral Test Switch
		25L - 2500 lumens					
		30L - 3000 lumens					

Housing and Reflector Ship Separately.

Due to our continued efforts to improve our products, product specifications are subject to change without notice.

### SPECIFICATIONS

#### Applications:

- New Construction Recessed Downlight suitable for Commercial and Architectural Applications.
- Suitable for ambient temperatures up to 35C (95F) with free airflow around fixture.

#### Key Dimensions

- Aperture – 6.25"
- Ceiling Cutout – 7.1"
- Overlap Flange – 7.75"

#### Construction:

- Galvanized Steel New Construction Housing
- Telescoping Bar Hangers Included (up to 24" grid)
- Light Engine and Driver Can Extend below the ceiling for ease of accessibility

#### Optical System:

- Self Flanged Aluminum Reflector with Semi-Diffuse Anodized Finish
- 80+ CRI / 3 SDCM Color Consistency
- 70% Lumen Maintenance at 50,000+ Hours
- 80 to 100 Lumens Per Watt
- Field Configurable Kelvin Temperature to 30K, 35K or 40K
- Lensed Wall Wash Option Available, may be orientated in 90 degree increments to housing

#### Electrical:

- 120 thru 277v 50/60hz Input Power
- <20% THD; PF > 0.9
- EMI FCC 47CFR Part 15, Class A
- Standard 0-10v dimming to 10%, 1% dimming available,
- Driver Sources up to 2ma of current to the dimming circuit
- FCC Part15, Class A

#### Certifications:

- UL listed for:
- Wet Location under covered ceilings with Downlight Option
  - Damp Location under covered ceiling with Wall Wash Option
  - Energy Star Listed

#### Battery Back Up

- EMR option supplied with a pre-wired 7watt LED battery that is UL Listed for Field Installation. Remote Test Switch included.
- EMI option supplied with a pre-wired 6watt LED self-diagnostic battery that is UL Listed for Field Installation. Test Switch ships with and is integral to the reflector. Not suitable for use with Wall Wash or NCT options.

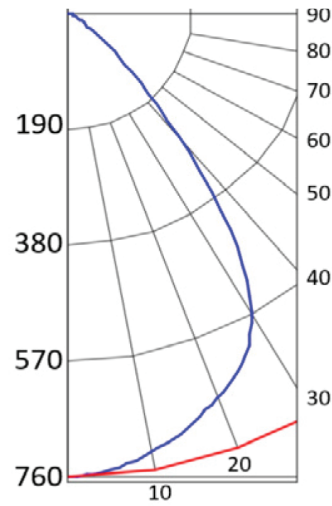
#### Warranty:

- Standard 5 Year Limited Warranty
- See [www.heliosltg.com/warranty](http://www.heliosltg.com/warranty) for Details.

## PHOTOMETRICS - 10L

Fixture: **6R10L35KWF**  
LED: 3500Kelvin, 80+ CRI

Delivered Lumens: 975  
System Wattage: 9.6  
System LPW: 102  
Spacing Criteria: 1.1



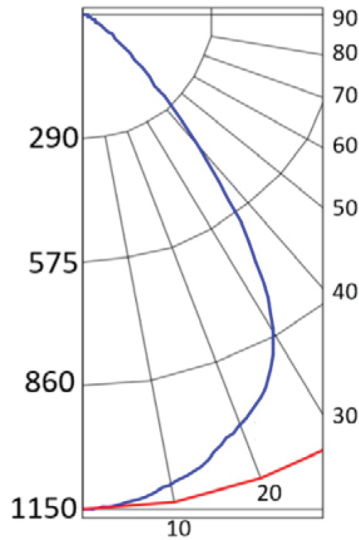
Degrees	Candela	Zonal Lumens		
		Zone	Total	% Luminaire
0	758			
10	730	71	71	7.3%
20	670	198	269	27.6%
30	563	290	559	57.3%
40	264	264	823	84.4%
50	73	113	936	96.0%
60	12	30	966	99.1%
70	4	7	973	99.8%
80	1	2	975	100.0%
90	0	0	975	100.0%

Test System: EVERFINE GO-R5000\_V2 SYSTEM V2.0.403  
Test Date: 2019-01-16  
Tested in accordance to IESNA LM-79-2008

## PHOTOMETRICS - 15L

Fixture: **6R15L35KWF**  
LED: 3500Kelvin, 80+ CRI

Delivered Lumens: 1463  
System Wattage: 14.9  
System LPW: 98  
Spacing Criteria: 1.1



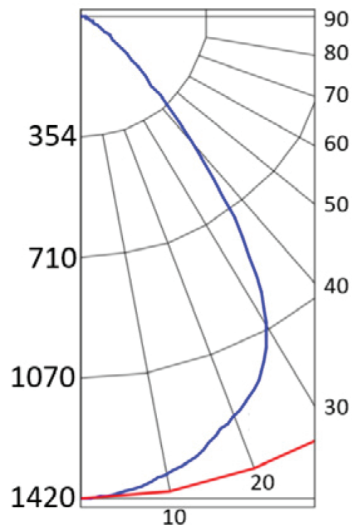
Degrees	Candela	Zonal Lumens		
		Zone	Total	% Luminaire
0	1148			
10	1108	108	108	7.4%
20	1017	301	409	28.0%
30	845	437	846	57.8%
40	389	392	1238	84.6%
50	107	166	1404	96.0%
60	19	44	1448	99.0%
70	6	11	1459	99.7%
80	9	4	1463	100.0%
90	0	0	1463	100.0%

Test System: EVERFINE GO-R5000\_V2 SYSTEM V2.0.403  
Test Date: 2019-01-16  
Tested in accordance to IESNA LM-79-2008

## PHOTOMETRICS - 20L

Fixture: **6R20L35KWF**  
LED: 3500Kelvin, 80+ CRI

Delivered Lumens: 1903  
System Wattage: 17.2  
System LPW: 111  
Spacing Criteria: 1.1



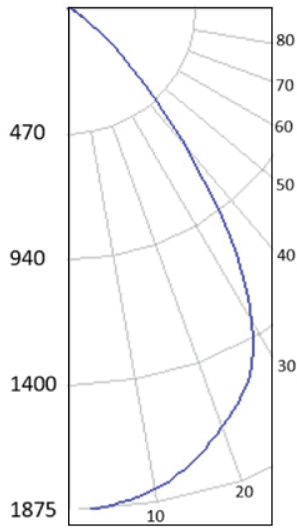
Degrees	Candela	Zonal Lumens		
		Zone	Total	% Luminaire
0	1417			
10	1398	109	109	5.7%
20	1290	316	425	22.4%
30	1090	653	1078	56.7%
40	560	465	1543	81.2%
50	140	246	1789	94.1%
60	24	92	1881	98.9%
70	8	13	1894	99.6%
80	3	5	1899	99.9%
90	0	2	1901	100.0%

Test System: EVERFINE GO-R5000\_V2 SYSTEM V2.0.403  
Test Date: 2019-01-16  
Tested in accordance to IESNA LM-79-2008

## PHOTOMETRICS - 25L

Fixture: **6R25L35KAN**  
LED: 3500Kelvin, 80+ CRI

Delivered Lumens: 2455  
System Wattage: 25.5  
System LPW: 96  
Spacing Criteria: 1.1



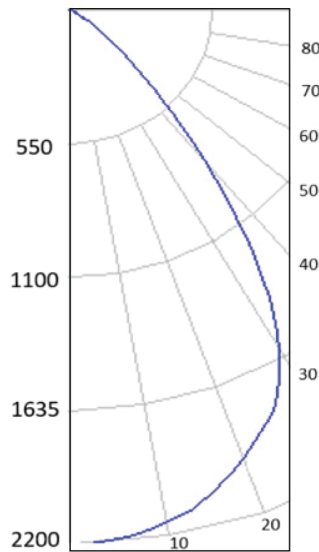
Degrees	Candela	Zonal Lumens		
		Zone	Total	% Luminaire
0	1874			
10	1823	177	177	7.2%
20	1662	494	671	27.3%
30	1357	707	1378	56.1%
40	667	637	2015	82.1%
50	201	301	2316	94.3%
60	49	93	2409	98.1%
70	18	31	2440	99.4%
80	6	12	2452	99.9%
90	0	3	2455	100.0%

Test System: EVERFINE GO-R5000\_V2 SYSTEM V2.0.403  
Test Date: 2019-06-17  
Tested in accordance to IESNA LM-79-2008

## PHOTOMETRICS - 30L

Fixture: **6R30L35KAN**  
LED: 3500Kelvin, 80+ CRI

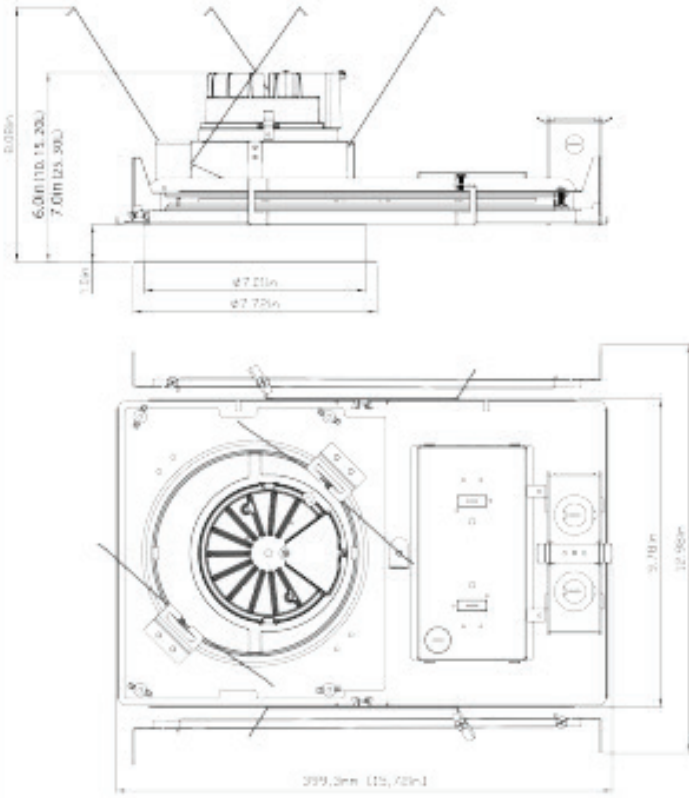
Delivered Lumens: 2897  
System Wattage: 31.1  
System LPW: 93.1  
Spacing Criteria: 1.1



Degrees	Candela	Zonal Lumens		
		Zone	Total	% Luminaire
0	2178			
10	2125	206	206	7.1%
20	1945	577	783	27.0%
30	1602	830	1613	55.7%
40	802	758	2371	81.8%
50	242	362	2733	94.3%
60	57	111	2844	98.2%
70	21	35	2879	99.4%
80	7	14	2893	99.9%
90	0	4	2897	100.0%

Test System: EVERFINE GO-R5000\_V2 SYSTEM V2.0.403  
Test Date: 2019-06-17  
Tested in accordance to IESNA LM-79-2008

## Alt Gen 1 Dimensions



## EMR and EMI Dimensions

